

# Please Follow Guidelines



**Face masks required in lobby.** Notify staff before entering if you need a mask.



**Avoid close contact.** Stay at least 6 feet from other people.



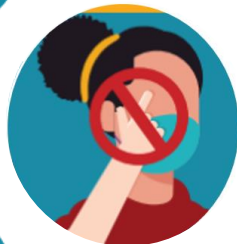
**Temperature checks required upon entry** and should not exceed 100.4°F.



**Wash your hands often** and use hand sanitizer before being seated.



**Cover coughs or sneezes** with a tissue or the inside of your elbow.



**Do not touch your eyes, nose, or mouth** while in the facility.



**Enhanced screening measures** required for staff, clients, and participants.



**Frequent cleaning and sanitizing** throughout the facility.



**No children, visitors, or guests** permitted in the facility.

